


Installation Guide

MNUL CS I, oblast B
ČR

Karel Röber

ARTECH

November 28, 2023

UniFi Devices		Quantity
	AC Professional	3



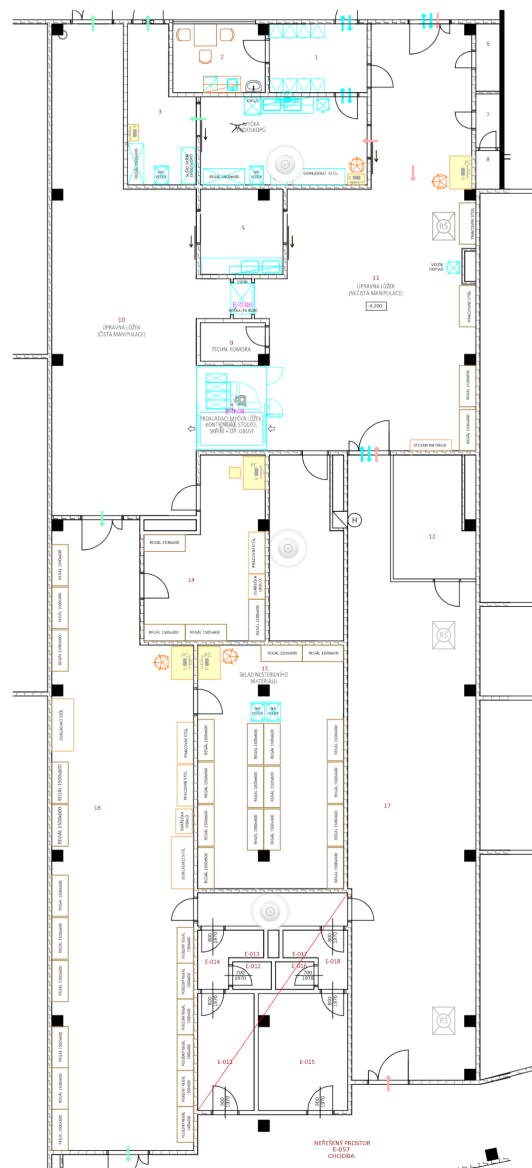
AC Professional



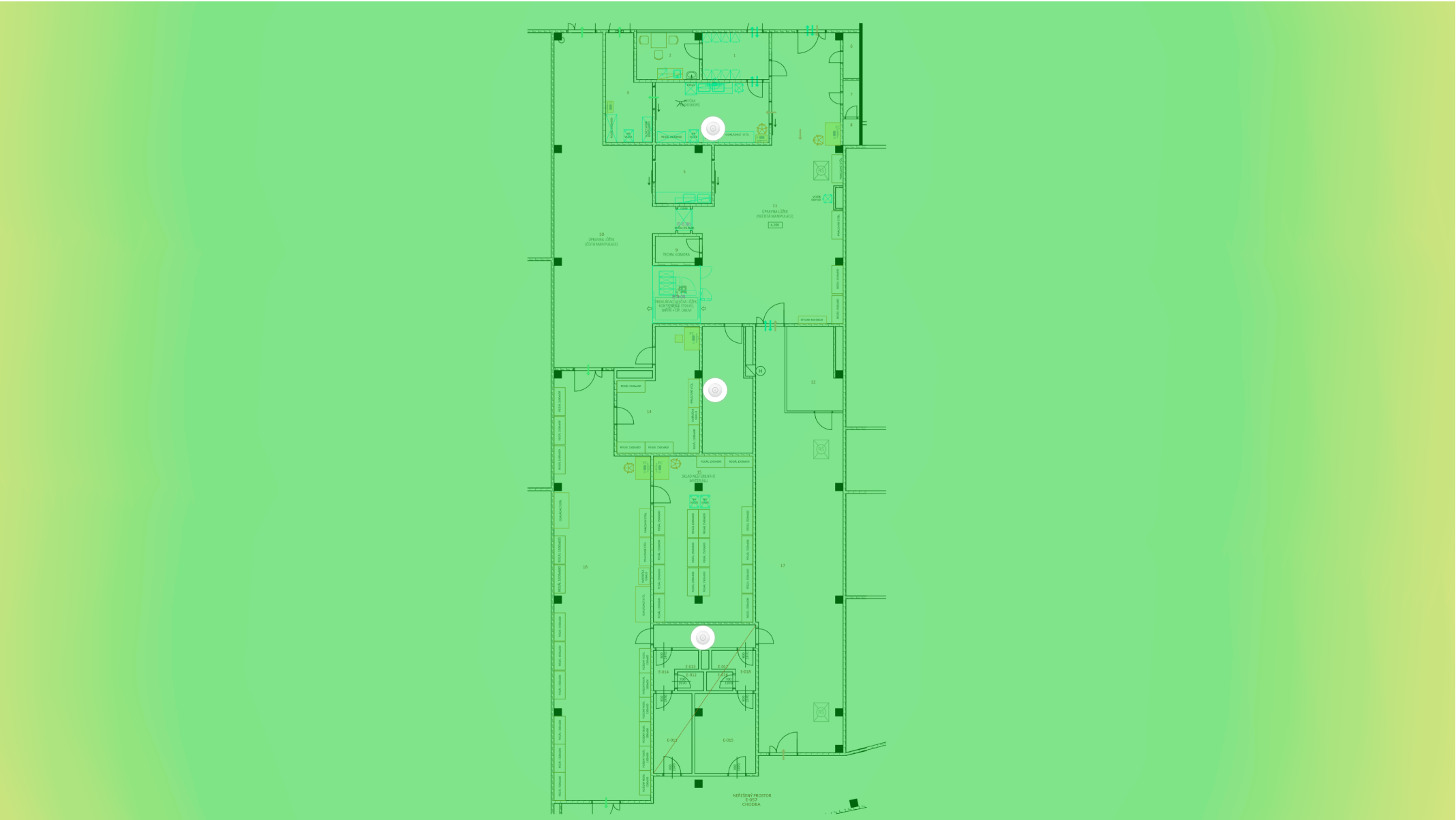
AC Professional



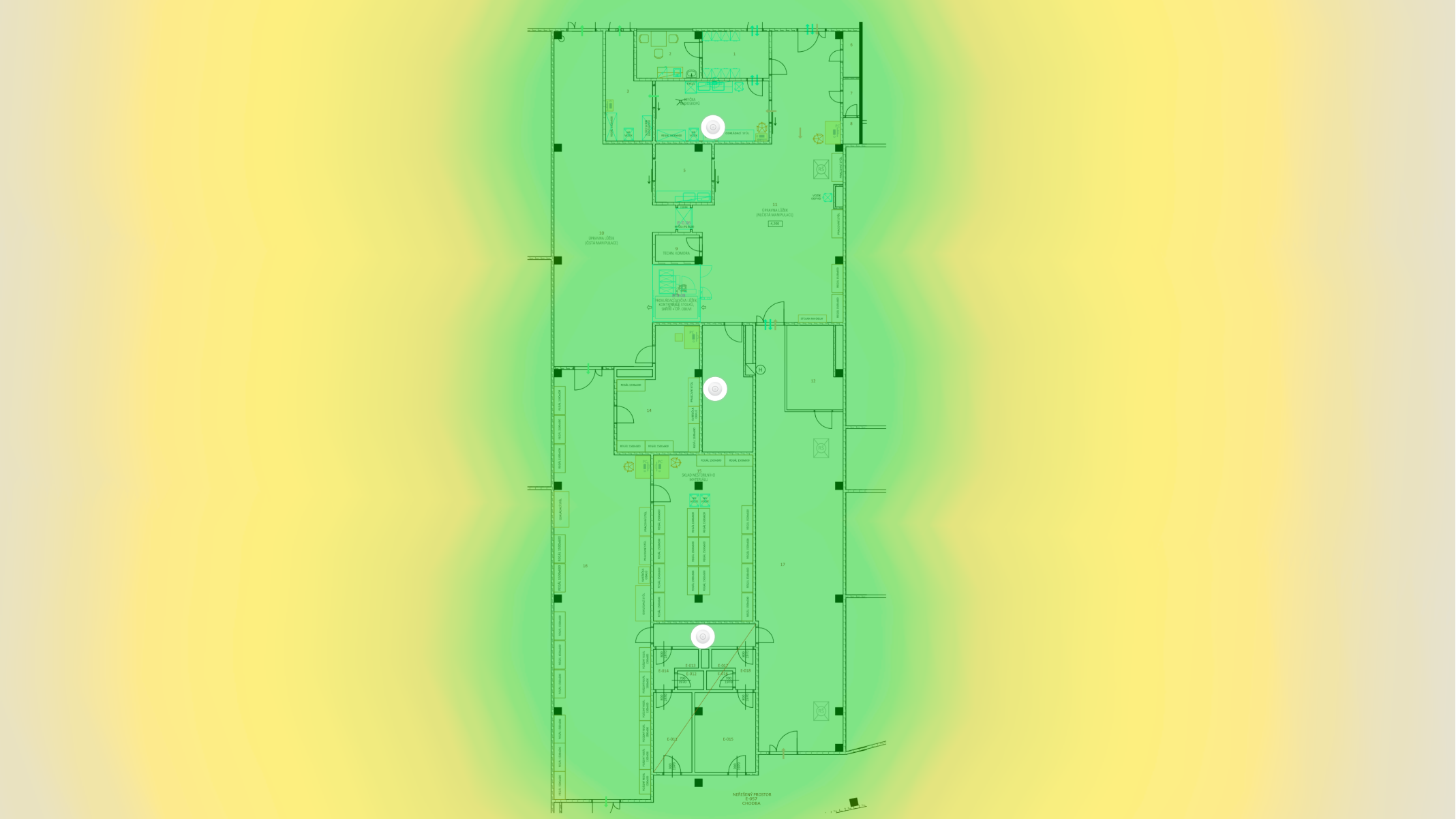
AC Professional



Estimated 2.4GHz WiFi Coverage



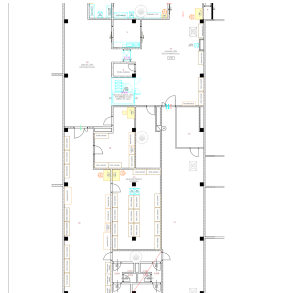
Estimated 5GHz WiFi Coverage



Step 1

Completed ☒

Mount all devices in right places as specified on the **Floor Plan** and add cabling.



Step 2

Completed ☒

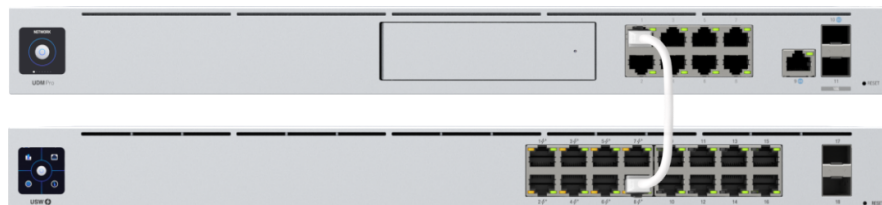
Turn Dream Machine (UDM Pro) on and connect it to the internet. Then, finish setting it up in either the UniFi Network mobile app, or the web application at unifi.ui.com.



Step 3

Completed ☒

Connect your console and switch with a network cable, as shown below. You can verify this connection on the following **Port View** page.



Step 4

Completed ☒

Connect your other UniFi devices to the switch with network cables, as shown below.
You can verify all connections on the following **Port View** page.

